



## INVESTMENT HIGHLIGHTS

- Merger of Eros, MAS Gold, and Rockridge to create a Saskatchewan focused gold and copper explorer
- Experienced management team and board
- Fully funded 2026 drill program targeting 30,000 to 40,000m with ~\$28M working capital
- November 2025 MRE: 0.9 Moz Au Indicated, 1.1 Moz Au Inferred, plus 200 Mlbs Cu (historical)
- Strong upside to expand resources and make new discoveries, led by Contact Lake Gold Project
- Three core projects, including the past producing Contact Lake Mine and Greywacke Lake
- Recent Contact Lake drilling returned 15.11 g/t Au over 51.83m (CL26036) and 17.88 g/t Au over 11.25m (CL26042); assays pending from seven additional holes

## ABOUT TRIDENT RESOURCES

Trident Resources Corp. (TSX-V:ROCK | OTCQB: TRDTF | FRA: 6BP0) is a Canadian gold exploration company focused on advancing district scale opportunities in the La Ronge Gold Belt of northern Saskatchewan.

The company has assembled a large and strategic land position in a belt that hosts past producing mines, known gold deposits, and extensive areas that have seen limited modern exploration.

Trident's portfolio includes the Contact Lake and Greywacke gold projects along with a growing regional land package covering prospective geology across the belt.

Through systematic exploration and active drilling programs, the company is working to expand known mineralization and unlock the broader district scale potential of the region.

With strong financial backing and an experienced technical and capital markets team, Trident's strategy is to advance multiple gold systems within the La Ronge Gold Belt and position the company as a leading exploration player in this emerging Canadian gold district.

## PROJECTS

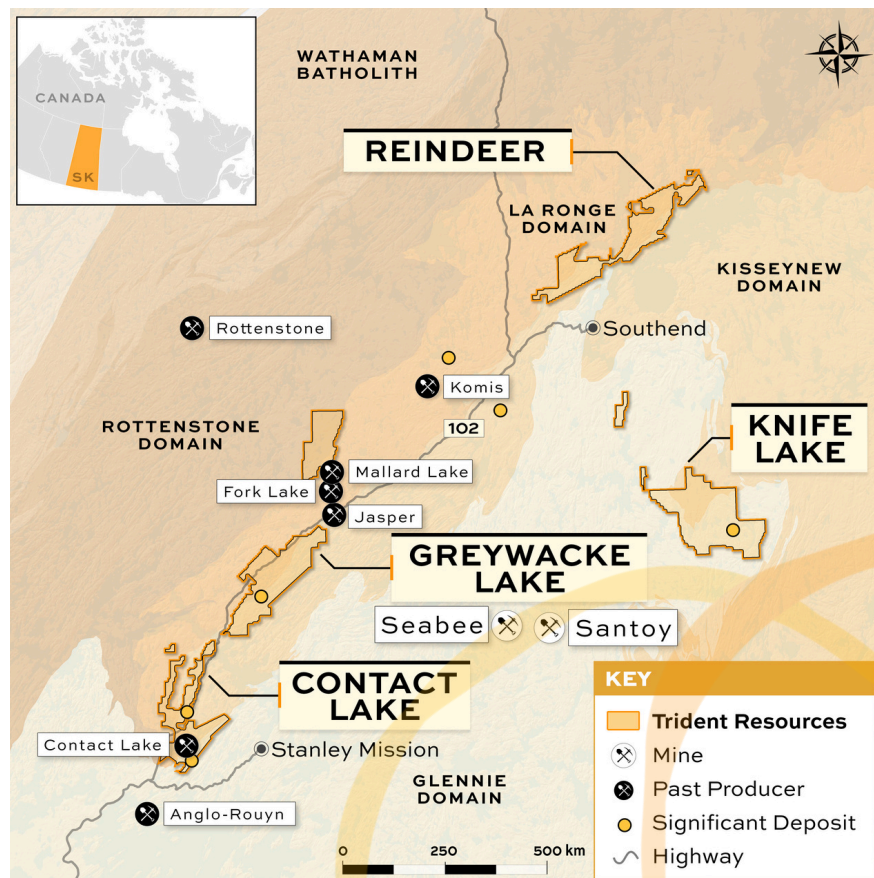
**CONTACT LAKE GOLD PROJECT** - Past producer that was shuttered in 1997 when the gold price was ~\$300/oz. Significant estimated gold reserves left in the ground according to Cameco internal report.

**GREYWACKE LAKE GOLD PROJECT** - is located approximately 88 km northeast of La Ronge and 22 km northeast of the community of Missinipe. Road access to the project is available via an 11 km access trail that branches southeast from Highway 102.

**KNIFE LAKE COPPER PROPERTY** - Historical Mineral Resource Estimate (2019) of 3.8 MT @ 1.02% Cu Eq. (Indicated) and 7.9 MT @ 0.67% Cu Eq. \*(Inferred).

\*CuEq% = Cu% + (Zn%\*0.395) + (Co%\*5.901) + (Au g/t\*0.553) + (Ag g/t\*0.005)

**Contact Lake Deposit:** The Contact Lake mine operated between 1995–1998 when gold price averaged close to \$350 USD. Final milled tonnage totaled 1,006,673 tonnes at a grade of 6.16 g/t Au for total poured gold content of 190,088 ounces (Cameco Final Operational Report 1999)

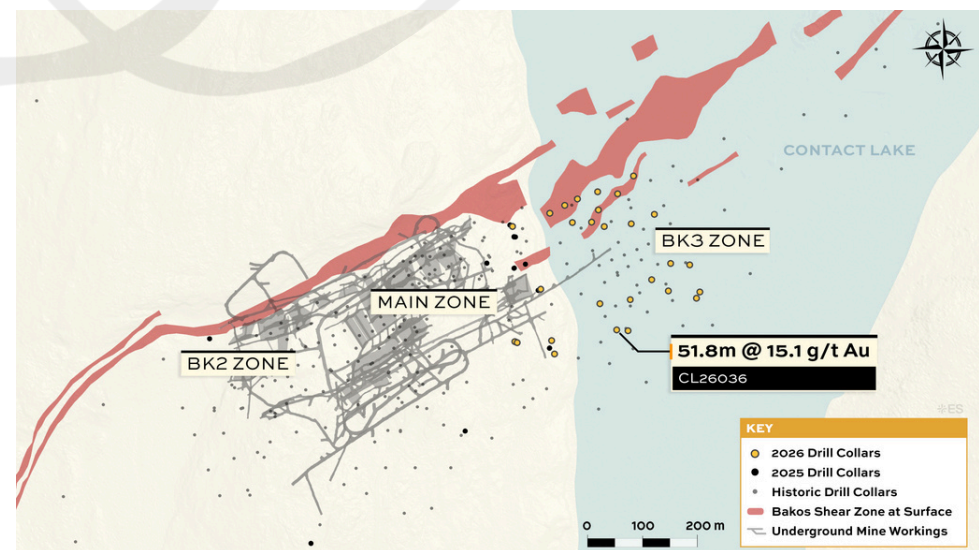


# TRIDENT RESOURCES - EXISTING GOLD MINERAL RESOURCE ESTIMATES FOR SASKATCHEWAN GOLD PROPERTIES

## NOTES ON THE TABLE:

These Historical Mineral Resource values are estimates of quantity, grade and metal content of the deposits. Mineral Resources, which are not Mineral Reserves, do not have demonstrated economic viability. No allowances have been made for mining losses and dilution. See end notes for detailed information on each Mineral Resource Estimate

Class	Deposit	In Situ Tonnage and Grade		Au Metal (oz)
		Tonnage (tonnes)	Au (gpt)	
Indicated	North Lake	16,410,000	0.89	469,664
	Preview SW	6,369,000	1.54	314,729
	Preview North	933,000	1.36	40,774
	Greywacke	1,021,000	2.17	71,364
	<b>Total</b>	<b>24,733,000</b>	<b>1.13</b>	<b>896,530</b>
Inferred	North Lake	20,666,000	0.72	481,311
	Preview SW	14,831,000	1.12	531,854
	Preview North	366,000	0.63	7,386
	Greywacke	2,732,000	1.24	109,092
	<b>Total</b>	<b>38,595,000</b>	<b>0.91</b>	<b>1,129,643</b>



## 2026 EXPLORATION PROGRAM:

### DRILL PROGRAM: ~30,000 TO 40,000 M

**CONTACT LAKE GOLD PROJECT** - Winter drill program at Contact Lake delivers high grade gold results.

CL26036 returned 15.11 g/t gold (Au) over 51.83m from 256.00m

CL26042 - 17.88 g/t Au over 11.25m from 86.00m

All holes intersected gold mineralization; assays are pending for the final 7 drill holes from the 2026 Contact Lake winter program + 11 at Preview SW

## TEAM

### Jonathan Wiesblatt, CEO and Director:

20+ years experience in investment management including 15-years as an institutional investor at an alternative investment company, Sprott Asset Management and Ninepoint Partners and advisor to one of Canada's largest Family Offices, Reichmann International.

### Tim Termuende, P.Geo, Director:

Professional geologist with over 35 years' experience in the mineral exploration industry; been involved with numerous publicly-traded corporations since 1994.

### Ross McElroy, P.Geo, Director:

Professional geologist with over 35 years of experience in the mining industry; CEO of Fission Uranium up until its acquisition by Paladin for over \$1B in 2024.

### Jordan Trimble, B.Sc., CFA, President and Director:

Current President and CEO of Skyharbour Resources Ltd.. Entrepreneur who has worked in resource industry specializing in corporate finance and strategy, and capital raising.

### Andrew J. Ramcharan, Ph.D, P.Eng, SVP Corp. Dev. & IR:

Extensive background in Corporate Development and IR with over 22 years experience. Previously held senior roles Sprott, IAMGOLD and RCF.

**Greywacke and Hailstone Properties:** Geological Mapping and Geochemical Sampling

## Capital Structure:

Issued and Outstanding shares:	39.3 million
Fully Diluted:	45.7 million
Options:	2.4 million
Warrants:	4 million
Working Capital:	CDN~ \$28 million
Market Capitalization:	CDN ~ \$162 million

## Contact Us:

 1030 – 505 Burrard St. Vancouver, BC, V7X 1M5

 [Info@tridentresourcescorp.com](mailto:Info@tridentresourcescorp.com)

 [www.tridentresourcescorp.com](http://www.tridentresourcescorp.com)